

# A selection of hotels near the École Normale Supérieure

<b>1. ★★★★★ HOTELS</b> .....	<b>2</b>
Relais Saint Jacques ★★★★★.....	3
<b>2. ★★★ HOTELS</b> .....	<b>4</b>
Comfort Hôtel Andre Latin ★★★.....	5
Hôtel Observatoire Luxembourg ★★★.....	6
Hôtel Saint-Christophe ★★★.....	7
Hôtel Acte V Paris ★★★.....	8
Hôtel des Jardins du Luxembourg ★★★.....	9
Hôtel Comfort Cardinal Rive Gauche ★★★.....	10
Hôtel des Grands Hommes ★★★.....	11
Hôtel du Panthéon ★★★.....	12
<b>3. ★★ HOTELS</b> .....	<b>13</b>
Hôtel des Mines ★★.....	14
Hôtel des 3 collèges ★★.....	15
Hôtel Cujas Panthéon ★★.....	16
Hôtel Cluny Sorbonne ★★.....	17
Hôtel du Brésil ★★.....	18
<b>4. LATE BOOKING</b> .....	<b>19</b>
Hôtel des Grandes Écoles ★★★.....	20
Hôtel Diana ★★.....	21
<b>5. RECAP</b> .....	<b>22</b>

## 1. ★★★★★ Hotels

## Relais Saint Jacques ★★★★★

3 rue de l'Abbé de l'Épée

75005 Paris

+33 (0)1 53 73 26 00

+33 (0)1 43 26 17 81

[info@relais-saint-jacques.com](mailto:info@relais-saint-jacques.com)



### Access:

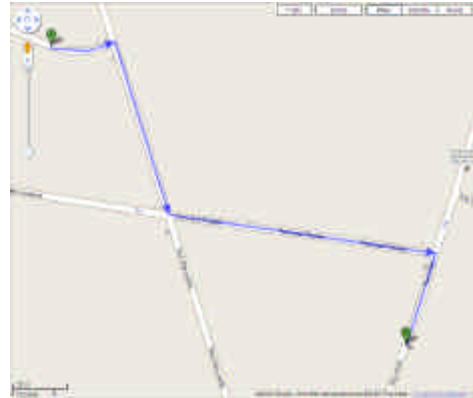
 Luxembourg

The RER B subway is a direct line to CDG, 40 minutes away; to Orly Airports 30 minutes away with bus transfer.

### Distance to the École Normale Supérieure :

200 m

2 minute walk



### Number of rooms :

21

### Room rates in €

249 to 349

Breakfast included: no

€ 17 (jam, ham, cheese, sausages...)

Wifi: free

Air conditioning

**Average mark** (based on *Tripadvisor.com*, *Fastbooking.fr*, *Booking.com*, *ParisHotel.com...*):  
7.95/10

### Plus:

Disabled friendly, quiet, the helpful staff speaks English fluently, rooms are very comfortable and clean; plenty of hot water for the shower and bath.

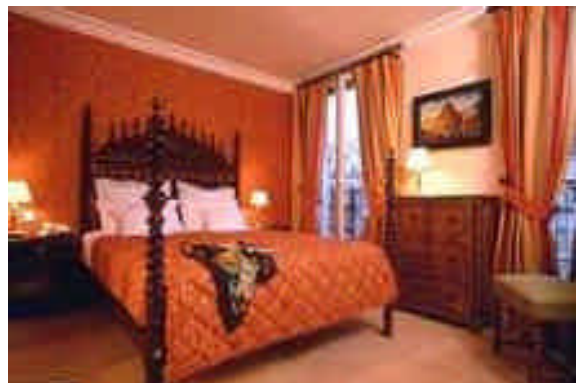
### Minus:

Bathrooms are not huge, bath with no shower curtain, half screen

### Notes:

Same owner as the Hôtel Observatoire Luxembourg (see below).

Some rooms have a view on the Panthéon (4<sup>th</sup> floor and above); 30-40% have a small balcony with a table and chairs.



**20 rooms can be booked.**

**Single: €205 (will be given a double room)**

**Double: €209**

**Breakfast included**

**Reference ISHN GROUP.**

**People interested should contact the hotel by 31 December.**

## 2. ★★★ Hotels

## Comfort Hôtel Andre Latin ★★★

50, rue Gay Lussac

75005 Paris

+33 (0)1 43 54 76 60

[reservation@hotel-andrelatin.com](mailto:reservation@hotel-andrelatin.com)



### Access:

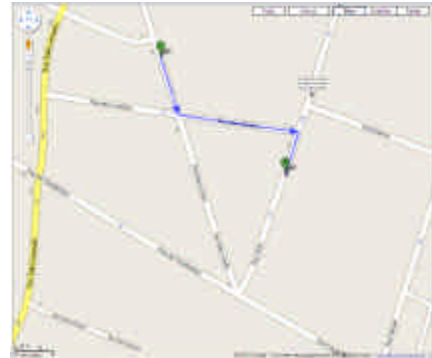
 Luxembourg

The RER B subway is a direct line to CDG, 40 minutes away; to Orly Airports 30 minutes away with bus transfer.

### Distance to the École Normale Supérieure :

200 m

2 minute walk



### Number of rooms :

69

### Room rates in €

6 Singles: no information

32 Doubles: 80 to 170

13 Twins: 80 to 200

Breakfast included: no

Buffet meal breakfast: € 12

Wifi: yes

Air conditioning in 50 rue Gay Lussac

**Average mark** (based on *Tripadvisor.com*, *Fastbooking.fr*, *Booking.com*, *ParisHotel.com...*):

7.4/10

### Plus:

Close to the ENS, helpful manager

### Minus:

Small bathrooms

### Notes :

It used to be two hotels, one on 50 rue Gay Lussac, the other on 52. Rooms at number 52 are a bit bigger and decorated in a warmer way. Rooms overlook the street. Singles are calmer but dark and small. Unless people ask for them, the hotel will not book those for a long stay. People asking for a single will be given a bigger room.



### Special offer:

**30 rooms can be booked at €110**

**From September to April**

**Reference: ISHN GROUP.**

Names, dates of arrival and departure, type of room, number of people, couple or not, will be asked for.

## Hôtel Observatoire Luxembourg ★★★

107 boulevard Saint-Michel

75005 Paris


+33 (0)1 46 34 10 12

+33 (0)1 43 26 17 81

[info@observatoirehotel.com](mailto:info@observatoirehotel.com)



### Access:

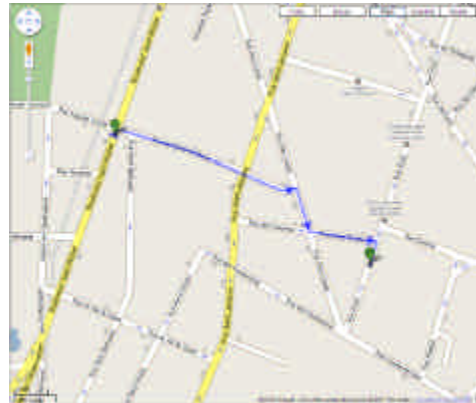
 Luxembourg

The RER B subway is a direct line to CDG, 40 minutes away; to Orly Airports 30 minutes away with bus transfer.

### Distance to the École Normale Supérieure :

500 m

6 minute walk



### Number of rooms :

40

### Room rates in €

Single 235 to 285

Double: 245 to 295

Breakfast included: no

€ 13

Wifi : payable

Air conditioning

**Average mark** (based on *Tripadvisor.com*, *Fastbooking.fr*, *Booking.com*, *ParisHotel.com...*):

8.1/10

### Plus:

Location, clean; helpful staff speaking fluently English; hot water, good pressure

### Minus:

Tiny elevator

### Hints from the web:

In order of size, the rooms to be booked have room numbers ending with 8, 3, 7 and 6. If you request a room that ends in a 3 (103, 203, etc), 6,7 or 8, you will get one of the bigger rooms.

### Notes:

Same owner as the Relais Saint-Jacques ( see above). Some rooms give onto the big gardens of the deaf and dumb school, peaceful and quiet.

The hotel owns the nearby restaurant Le Luco (€ 20 menu).



### 25 rooms can be booked for:

**Single: €165 (will be given a double room)**

**Double: €169**

**Breakfast included**

**Reference ISHN GROUP**

**People interested should contact the hotel by 31 December.**

## Hôtel Saint-Christophe ★★★

17 rue Lacépède

75005 Paris

+33 (0)1 43 31 81 54

+33 (0)1 43 31 12 54

[saintchristophe@wanadoo.fr](mailto:saintchristophe@wanadoo.fr)

[www.charm-hotel-paris.com](http://www.charm-hotel-paris.com)



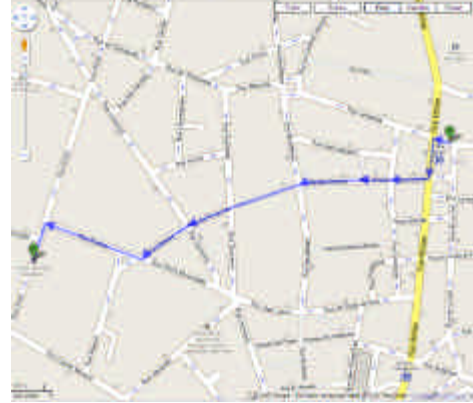
### Access:

🚇 Place Monge

### Distance to the École Normale Supérieure :

800 m

9 minute walk



### Number of rooms :

30

### Room rates in €

Single: 129

Double: 138

Twin: 138

Breakfast included: no

€9

Wifi: payable

No air conditioning, ventilators are provided in every room

**Average mark** (based on *Tripadvisor.com*, *Fastbooking.fr*, *Booking.com*, *ParisHotel.com...*):

9,2/10

### Plus:

Location, helpful staff

### Minus:

Nothing special

### Notes :

Located at the corner of two one-way streets.



### 25 rooms can be booked

Single: €99

Double/twin: €113

Reference: ISHN GROUP

To be confirmed; more details expected by the end of September

## Hôtel Acte V Paris ★★★

55 rue Monge

75005 Paris

+33 (0)1 43 26 87 90

+33 (0)1 43 54 47 25

[contact@hotel-actev.com](mailto:contact@hotel-actev.com)



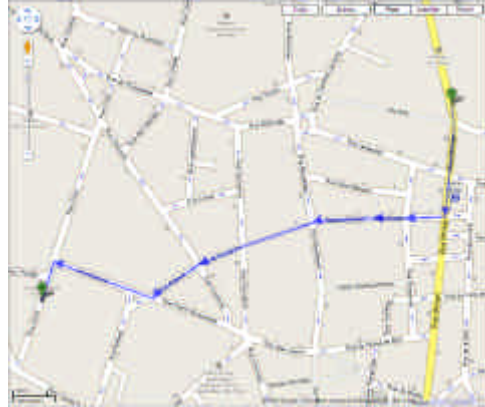
### Access:

🚇 Cardinal Lemoine, Place Monge

### Distance to the École Normale Supérieure :

800 m

10 minute walk



### Number of rooms :

36

### Room rates in €

3 Singles: 90 to 135

Double: 100 to 180

Twin: 100 to 180

Breakfast included: no

€ 10

Wifi: € 2

Air conditioning in every room

**Average mark** (based on *Tripadvisor.com*, *Fastbooking.fr*, *Booking.com*, *ParisHotel.com...*):  
8.6/10

### Plus:

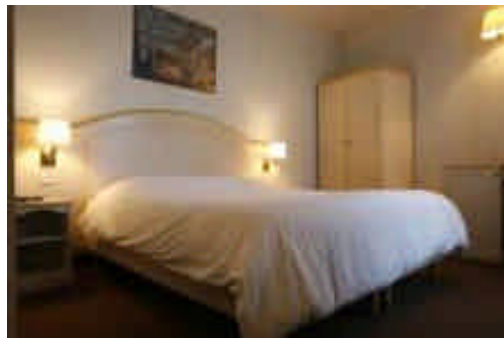
Helpful staff, clean rooms, no noise from the street

### Minus:

Small lift, small bathrooms.

### Notes:

Some rooms overlook the Arènes de Lutèce, a peaceful first century amphitheatre, starting from floor 4.



**15 rooms can be booked for**

**Single: €108**

**Double/twin: €128**

**Breakfast included**

**Reference: ISHN GROUP**

**People interested should contact the hotel by April 2010.**

CB Visa | American Express | Diners club | Eurocard/Mastercard



## Hôtel des Jardins du Luxembourg ★★★

5 impasse Royer Collard  
75005 Paris

+33 (0)1 43 26 34 23

[jardinslux@wanadoo.fr](mailto:jardinslux@wanadoo.fr)



### Access:

Cluny La Sorbonne

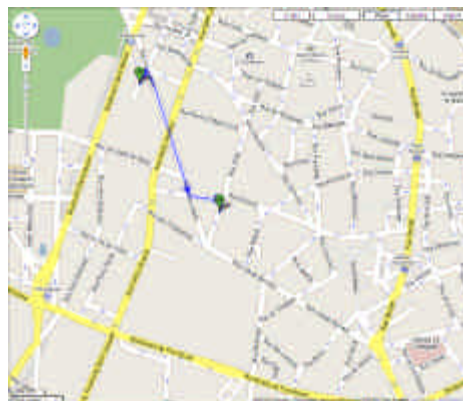
Luxembourg

The RER B subway is a direct line to CDG, 40 minutes away; to Orly Airports 30 minutes away with bus transfer.

### Distance to the École Normale Supérieure :

600 m

7 minute walk



### Number of rooms :

26

### Room rates in €

Single: no information

Double: 140 to 150

Twin: no information

Breakfast included: no

€10

Wifi: yes

Air conditioning

**Average mark** (based on *Tripadvisor.com*, *Fastbooking.fr*, *Booking.com*, *ParisHotel.com...*):  
8.4/10

### Plus:

Location, warm tones

### Minus:

No shower doors

### Trivia:

Sigmund Freud lived there in 1885 (then called Hôtel de la Paix).

### Notes:

Disabled friendly

Located in a quiet dead end street. Nice view onto the old building opposite the street, covered with ivy.

Two very big double bedrooms apart from the hotel, on ground floor.



**10 rooms booked for €130 (tbc).**

## Hôtel Comfort Cardinal Rive Gauche ★★★

20-22 rue Pascal

75005 Paris

+33 (0)1 47 07 41 92

+33 (0)1 47 07 43 80

[paris@hotelcardinal.com](mailto:paris@hotelcardinal.com)



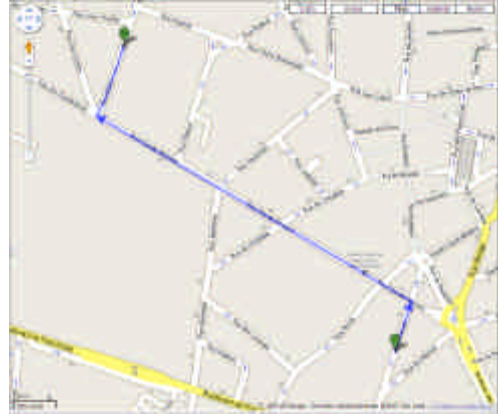
### Access:

Les Gobelins

### Distance to the École Normale Supérieure :

700 m

9 minute walk



### Number of rooms :

36

### Room rates in €

3 Singles: 115 to 175

22 Double: 142 to 175

3 Twin: 165

Breakfast included: no

€ 12 to 14

Wifi: free

Reception: 24hrs

**Average mark** (based on Tripadvisor.com, Fastbooking.fr, Booking.com, ParisHotel.com... ): 8.2/10

### Plus:

Location, helpful staff

### Minus:

Odd slight smell of mold in the breakfast room



### 10 rooms available at a contract rate:

Single: €95

Double/twin: €120

Breakfast included.

Reference: ISHN GROUP.

The hotel will ask for a 15% account 2 months prior to the arrival.

CB Visa | American Express | Carte JCB | Traveler Cheques | Diners club | Eurocard/Mastercard

## Hôtel des Grands Hommes ★★★

17, Place du Panthéon  
75005 Paris

+33 (0)1 46 34 19 60

+33 (0)1 43 26 67 32

[reservation@hoteldesgrandshommes.com](mailto:reservation@hoteldesgrandshommes.com)



### Access:

Ⓜ Cardinal Lemoine, Cluny Sorbonne

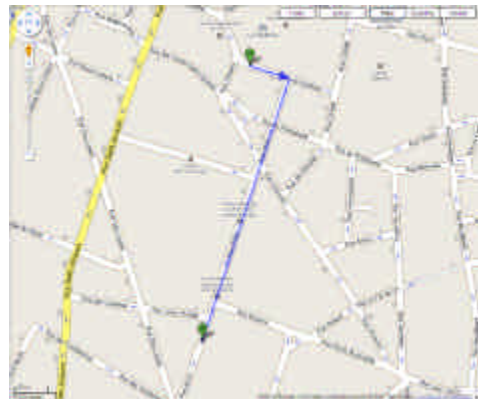
Ⓜ Luxembourg

The RER B subway is a direct line to CDG, 40 minutes away; to Orly Airports 30 minutes away with bus transfer.

### Distance to the École Normale Supérieure :

500 m

5 minute walk



### Number of rooms :

31

### Room rates in €

Single: 270 to 310

Double: 270 to 310

Twin: 270 to 310

Breakfast included: no

Breakfast service: € 13

Wifi: free in the lobby

Air conditioning

**Average mark** (based on *Tripadvisor.com*, *Fastbooking.fr*, *Booking.com*, *ParisHotel.com...*):

9.2/10

### Plus:

Space, location, view onto the Panthéon from the most expensive rooms

### Minus:

Room rates

### Notes:

This hotel and the Hôtel du Panthéon are twin hotels, belonging to the same owners; decoration changes from one to another.



**10 rooms could be booked for €220 and €260, taxes and breakfast included following a visit.**

**14-20 June 2010.**

**Altered rates in case of a change.**

**Reference ISHN**

**30% account asked for.**

**To be confirmed and paid by 15 September.**

## Hôtel du Panthéon ★★★

19, Place du Panthéon  
75005 Paris

+33 (0)1 43 54 32 95

+33 (0)1 43 26 64 65

[reservation@hoteldupantheon.com](mailto:reservation@hoteldupantheon.com)



### Access:

Ⓜ Cardinal Lemoine, Cluny Sorbonne

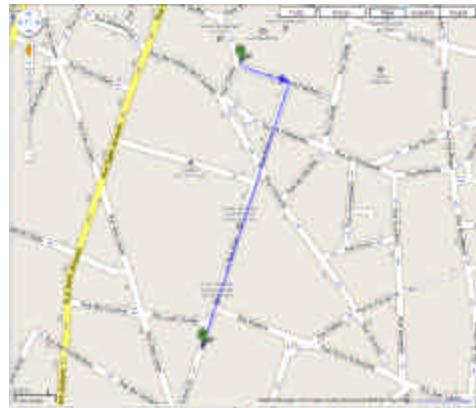
Ⓜ Luxembourg

The RER B subway is a direct line to CDG, 40 minutes away; to Orly Airports 30 minutes away with bus transfer.

### Distance to the École Normale Supérieure :

500 m

5 minute walk



### Number of rooms :

36

### Room rates in €

Single: 270 to 310

Double: 270 to 310

Twin: 270 to 310

Breakfast included: no

Breakfast service: € 13

Wifi: free in the lobby

Air conditioning

**Average mark** (based on *Tripadvisor.com*, *Fastbooking.fr*, *Booking.com*, *ParisHotel.com...*):

8.75/10

### Plus:

Space, location, view onto the Panthéon from the most expensive rooms

### Minus:

Room rates

### Notes:

This hotel and the Hôtel des Grands Hommes are twin hotels, belonging to the same owners; decoration changes from one to another.



10 rooms could be booked for €220 and €260, taxes and breakfast included following a visit.

14-20 June 2010.

Altered rates in case of a change.

Reference ISHN

30% account asked for.

To be confirmed and paid by 15 September.

### 3. ★★ Hotels

## Hôtel des Mines ★★

125 boulevard Saint-Michel

75005 Paris

+33 (0)1 43 54 32 78

+33 (0)1 46 33 72 52

[hoteldesmines@wanadoo.fr](mailto:hoteldesmines@wanadoo.fr)



### Access:

Denfert-Rochereau, Cluny La Sorbonne

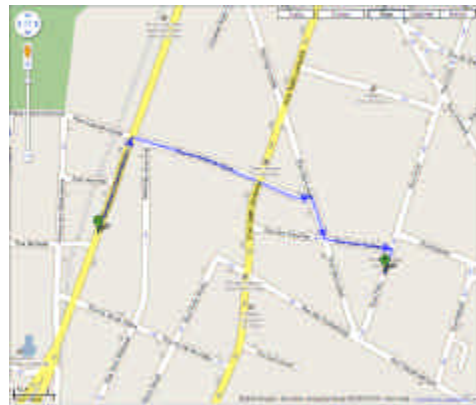
Luxembourg

The RER B subway is a direct line to CDG, 40 minutes away; to Orly Airports 30 minutes away with bus transfer.

### Distance to the École Normale Supérieure :

700 m

8 minute walk



### Number of rooms :

50

### Room rates in €

5 Singles: 120

Double: 150

Twin: 150

Breakfast included: no

€9

Wifi: free

Air conditioning

**Average mark** (based on *Tripadvisor.com*, *Fastbooking.fr*, *Booking.com*, *ParisHotel.com...*):

8.45/10

### Plus:

Good balance quality/price

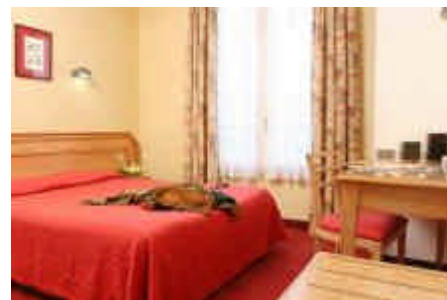
### Minus:

Small showers

### Notes:

Ask for a room with either a bathroom or a shower making an angle (there are a few, and bathrooms are more comfortable).

Rooms onto the boulevard have two sets of windows, the old ones, kept to maintain the image of an old building, and new soundproof ones.



### 6 rooms available at a contract rate:

Single :€94

Double/twin: €103

Reference: ISHN GROUP.

People should get in touch with the hotel by 1 February.

## Hôtel des 3 collèges ★★

16 rue Cujas

75005 Paris

+33 (0)1 43 54 67 30

+33 (0)1 46 34 02 99

[hotel@3colleges.com](mailto:hotel@3colleges.com)



### Access:

Cluny La Sorbonne

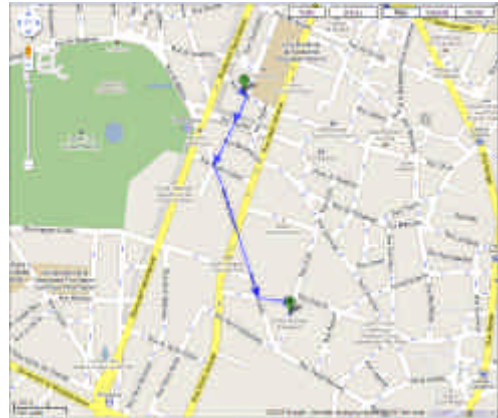
Luxembourg

The RER B subway is a direct line to CDG, 40 minutes away; to Orly Airports 30 minutes away with bus transfer.

### Distance to the École Normale Supérieure :

800 m

9 minute walk



### Number of rooms :

44

### Room rates in €

Single: 82 (single bed with shower), to 102 and 107 (big bed with shower and bath respectively)

Double/twin: 102 to 107 (shower and bath respectively)

Top floor rooms: 135 to 170 (larger rooms)

Expect a €2-3 raise in the rates for 2010

Breakfast included: no

Two formulas: €5 and €9

Wifi: payable

Air conditioning

**Average mark** (based on *Tripadvisor.com*, *Fastbooking.fr*, *Booking.com*, *ParisHotel.com...*):  
9/10

### Plus:

Location, room rates, staff used to working for business trips

### Minus:

Small rooms, poor sound-proofing

### Notes:

Located by the Sorbonne, close to 5 cinemas showing mostly classics.

Top floor rooms are more expensive as they are larger.



**10 rooms have been booked**

**3 single bed with shower**

**3 big bed with shower**

**4 big bed with bath**

**Conditions to be announced.**



## Hôtel Cujas Panthéon ★★

18 rue Cujas

75005 Paris

+ 33 (0)1 43 54 58 10

+ 33 (0)1 43 25 88 02

[hotel-cujas-pantheon@wanadoo.fr](mailto:hotel-cujas-pantheon@wanadoo.fr)



### Access:

🚇 Cluny La Sorbonne

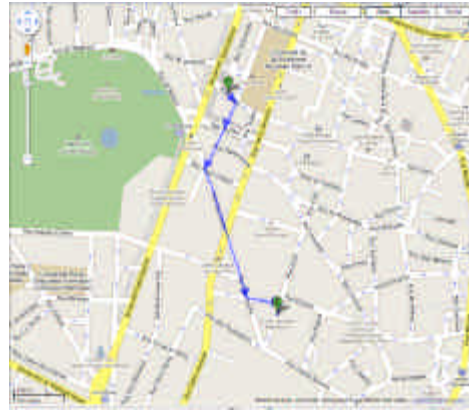
🚇 Luxembourg

The RER B subway is a direct line to CDG, 40 minutes away; to Orly Airports 30 minutes away with bus transfer.

### Distance to the École Normale Supérieure :

800 m

9 minute walk



### Number of rooms :

48

### Room rates in €

10 Singles: from 63

Double: from 82

Twin: from 82

Breakfast included: no

Lift: yes

Wifi: on demand

Air conditioning

**Average mark** (based on *Tripadvisor.com*, *Fastbooking.fr*, *Booking.com*, *ParisHotel.com...*):

7.55/10

### Plus:

Location, room rates

### Minus:

Either a noisy room with enough space but lack of room for your luggage, or a small one with no view.

### Notes:

Located by the Sorbonne, close to 5 cinemas showing mostly classics.

Room rates to be confirmed in March.



## Hôtel Cluny Sorbonne ★★

8 rue Victor Cousin  
75005 Paris

☎ +33 (0)1 43 54 66 66

☎ +33 (0)1 43 29 68 07

[cluny@club-internet.fr](mailto:cluny@club-internet.fr)



### Access:

🚇 Cluny La Sorbonne

🚇 Luxembourg

The RER B subway is a direct line to CDG, 40 minutes away; to Orly Airports 30 minutes away with bus transfer.

### Distance to the École Normale Supérieure :

800 m

9 minute walk



### Number of rooms :

23

### Room rates in €

Double: 95

Breakfast included: no

€6

Wifi: no information

**Average mark** (based on *Tripadvisor.com*, *Fastbooking.fr*, *Booking.com*, *ParisHotel.com...*):

8,8/10

### Plus:

Location, staff

### Minus:

Small rooms, small lift

### Notes:

Poet Arthur Rimbaud stayed there.

Located by the Sorbonne, close to 5 cinemas showing mostly classics.



## Hôtel du Brésil★★

10 Rue Le Goff

75005 Paris

+33 (0)1 43 54 76 11

+33 (0)1 46 33 45 78

[hoteldubresil@wanadoo.fr](mailto:hoteldubresil@wanadoo.fr)



### Access:

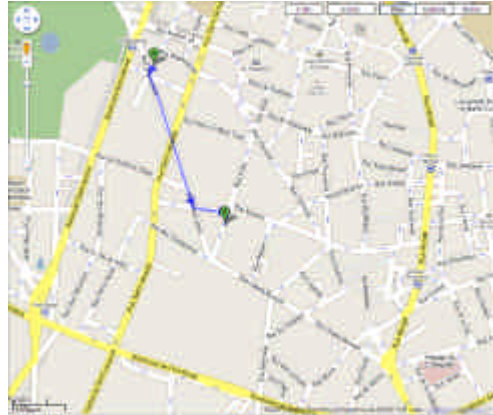
: Luxembourg

The RER B subway is a direct line to CDG, 40 minutes away; to Orly Airports 30 minutes away with bus transfer.

### Distance to the École Normale Supérieure :

600 m

6 minute walk



### Number of rooms :

29

### Room rates in €

11 Singles: 82 to 89

9 Double: 89 to 95

8 Twin: 100 to 110

Breakfast included: no

€ 6

Wifi: free

No air conditioning, ventilators are provided in every room

**Average mark** (based on *Tripadvisor.com*, *Fastbooking.fr*, *Booking.com*, *ParisHotel.com...*):

7.1/10

### Plus:

Location, good balance quality/price, quiet street

### Minus:

Tiny rooms, tiny bathrooms, no view in singles, lack of space for luggage

### Trivia:

Sigmund Freud lived there from 1885 to 1886.

### Notes:

They do not book groups as before. They need the names of the guests by early September for a special offer.

Account asked for: one night per person.

Contact through internet.

**Rooms available to this day (29 July 2009) : 20.**

## 4. Late booking

## Hôtel des Grandes Écoles ★★★

75 rue du Cardinal Lemoine  
75005 Paris

+33 (0)1 43 26 79 23

+33 (0) 43 25 28 15

<http://www.hotel-grandes-ecoles.com>



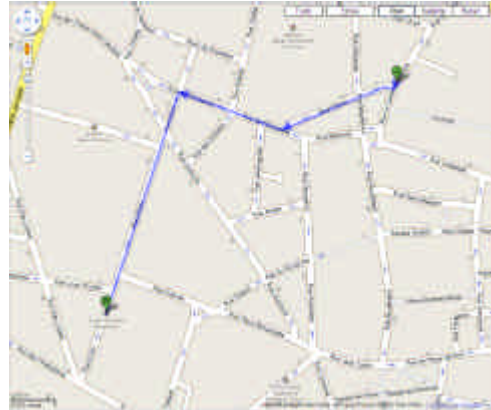
### Access:

🚇 Cardinal Lemoine

### Distance to the École Normale Supérieure :

700 m

8 minute walk



### Number of rooms :

51

### Room rates in €

Single: 115 to 140

Double: 115 to 140

Twin: 115 to 140

Breakfast included: no

€ 9

Wifi: yes, payable

No air conditioning, ventilators are provided for in every room

**Average mark** (based on *Tripadvisor.com*, *Fastbooking.fr*, *Booking.com*, *ParisHotel.com...*):

8,7/10

### Plus:

Location, in a very peaceful and quiet courtyard with a garden, close to restaurants and cafés

### Minus:

Top of a hill

### Notes:

One aisle of the building is accessible to people with disabilities.

They do not work with groups.



**They do not book early.**

**Booking for June should be done from 15 February, not earlier.**

[http://www.france-hotel-guide.com/france/resa/booking\\_email-form.php?n\\_clients=229](http://www.france-hotel-guide.com/france/resa/booking_email-form.php?n_clients=229)

**4 or 5 rooms available only.**

## Hôtel Diana ★★

73 rue Saint-Jacques  
75005 Paris

☎ +33 (0)1 43 54 92 55

☎ +33 (0)1 46 34 24 30

<http://www.hotel-diana-paris.com/English--hotel.phtml>

### Access:

🚇 Cluny La Sorbonne

**Distance to the École Normale Supérieure :**

1000 m

14 minute walk

### Number of rooms :

23

### Room rates in €

Single: 79

Double: 95

Breakfast included: no

€ 8

Wifi: free

**Average mark** (based on *Tripadvisor.com*, *Fastbooking.fr*, *Booking.com*, *ParisHotel.com...*):  
9/10

### Plus:

Location, clean and very good value.

### Minus:

Shower



**They do not book rooms more than 2 months prior to the arrival.**

## 5. Recap

★★★★★ Hotel	Room rates (single/double)	Rooms available for a group
Relais Saint Jacques	205/209	25

★★★★ Hotels	Room rates (single/double)	Rooms available for a group
Comfort Hôtel Andre Latin	110	30
Hôtel Observatoire Luxembourg	165/169	25
Hôtel Saint Christophe	95/113 (tbc)	25
Hôtel Acte V Paris	108/128	15
Hôtel Cardinal Rive Gauche	95/120	10
Hôtel des Grands Hommes	220/260	10
Hôtel du Panthéon	220/260	10

★★★ Hotels	Room rates (single/double)	Rooms available for a group
Hôtel des Mines	94/103	6
Hôtel des 3 Collèges	82/107	10
Hôtel Cujas Panthéon	63/82 (tbc)	-
Hôtel Cluny Sorbonne	95	-
Hôtel du Brésil	82/110	-

Late booking	Category	Room rates (single/double)	When to book
Hôtel des Grandes Écoles	★★★★ Hotel	115/140	Starting 15 February
Hôtel Diana	★★★ Hotel	75/95	Starting 15 April

Other hotels have been visited or documented.

Feel free to get in touch with the local committee for further information.

Bertrand Di Cesare  
07 August 2009